

Driving DC efficiency with Image Technology:

A picture is worth a thousand words...or more

Sponsored by:

 **DATALOGIC**

Presented by:

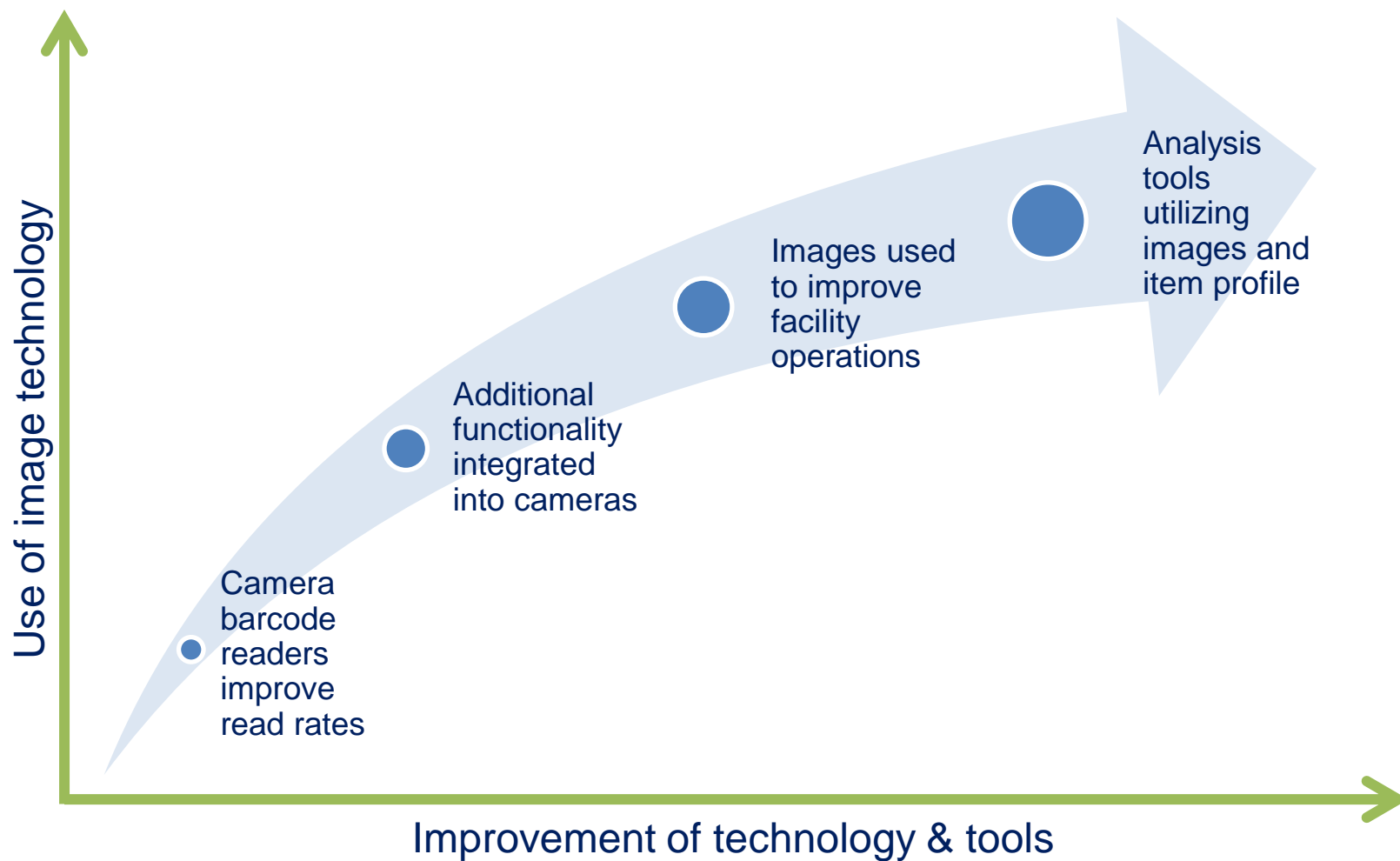
John Park
Product Manager

 **PROMAT** | 2013
AN MHIA INTERNATIONAL EXPO
McCORMICK PLACE CHICAGO JAN 21-24
www.ProMatShow.com



MHI

2013 MHI™ Copyright claimed as to audiovisual works of seminar sessions and sound recordings of seminar sessions. All rights reserved.



Barcode Reading

Damaged codes



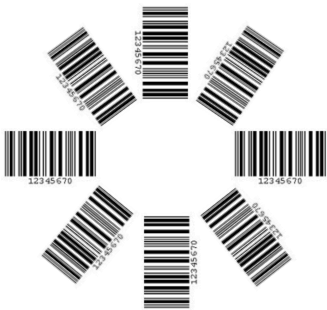
High transport speeds



Noisy codes



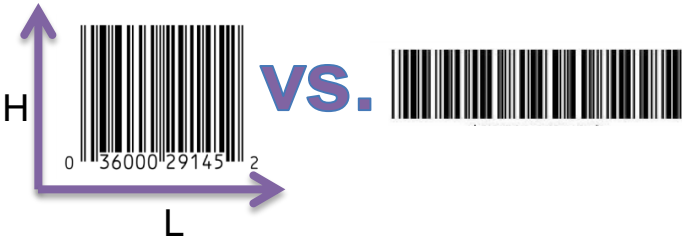
Orientation



Specular issues



Low aspect ratio



2D vs 1D



Low quality codes



Poorly Printed



Folds / Tears

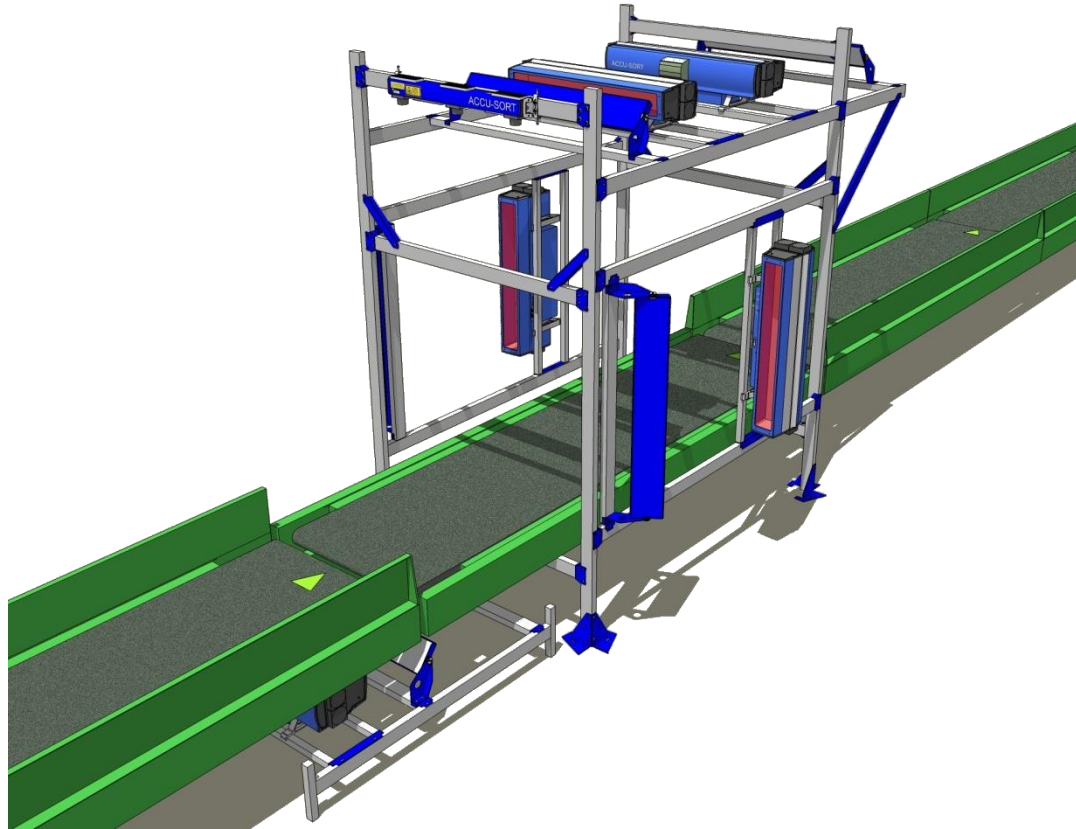


Obstructions

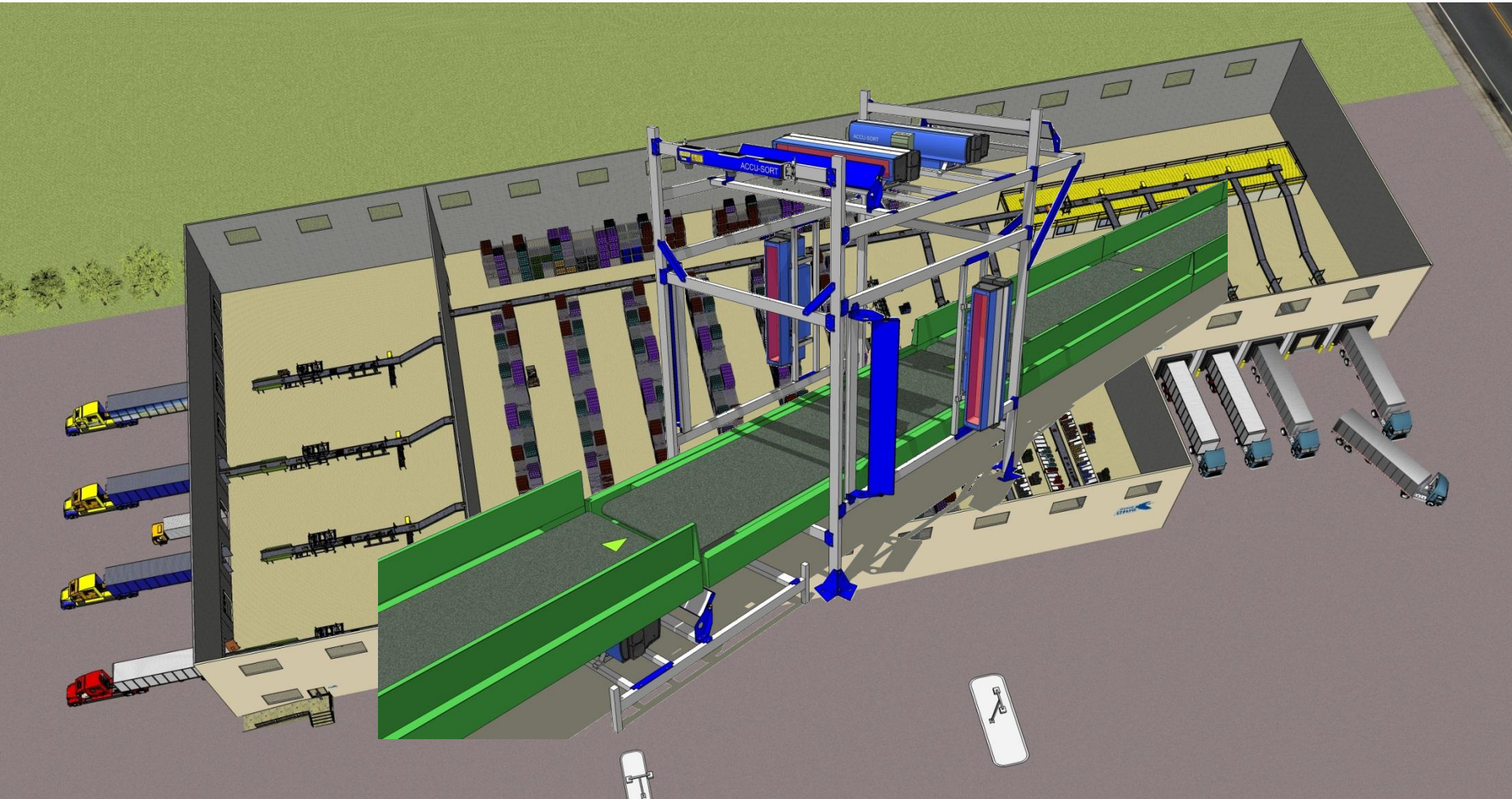


Low Contrast

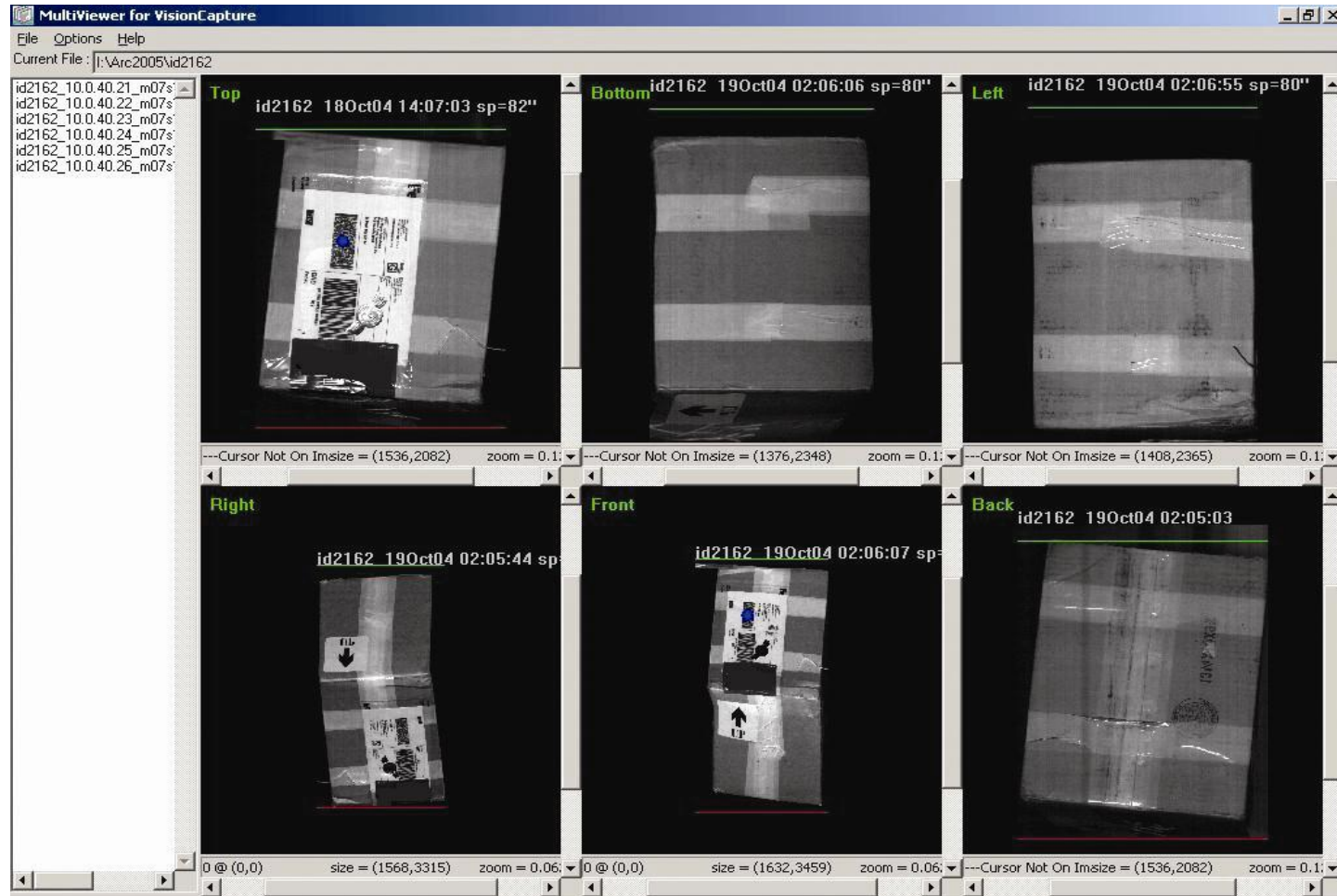
The problem with just reading barcodes



This is What You're Worried About

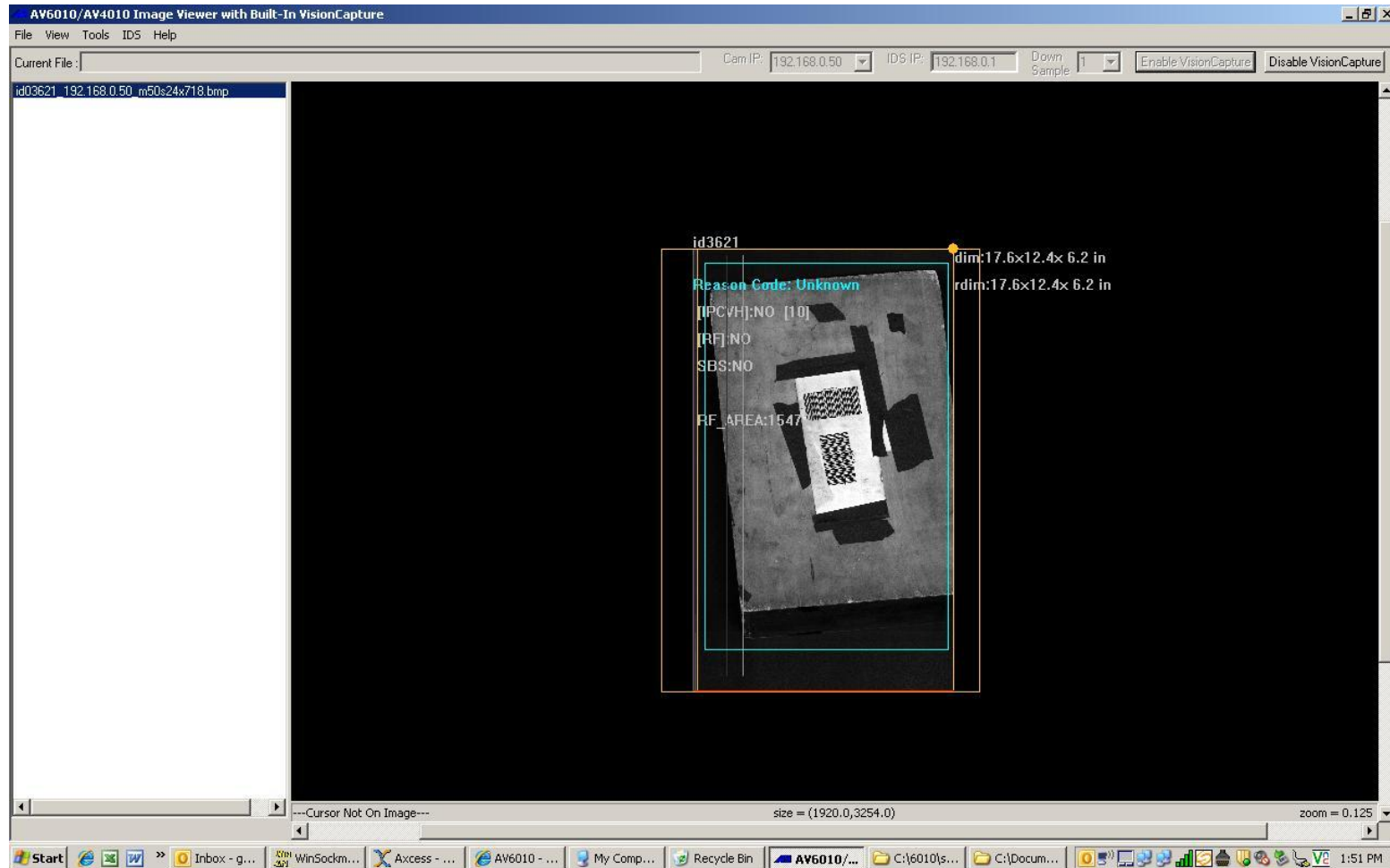


No read analysis



Revenue Recovery

Courier express parcel

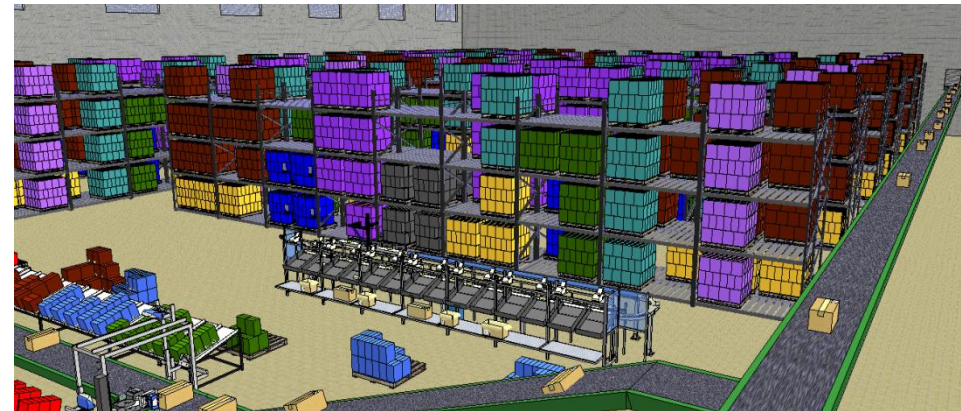
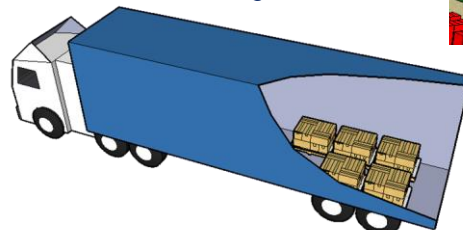


The diagram illustrates the FAST Monitor system architecture. On the left, a blue FAST Monitor unit is shown with a green laser line indicating its measurement range. Below it, a blue box contains the text "Compares DIM data to carton dimension data on file". An arrow points from this box to a large blue server rack labeled "FAST Monitor". Above the server rack, a blue box contains the text "Dimensions & barcode data to remote storage". An arrow points from the server rack to a network diagram on the right. The network diagram shows a central "SERVER" connected to several "CLIENT" computers. Above the network diagram, a blue box contains the text "Host requests DIM and barcode data".

[illegible]

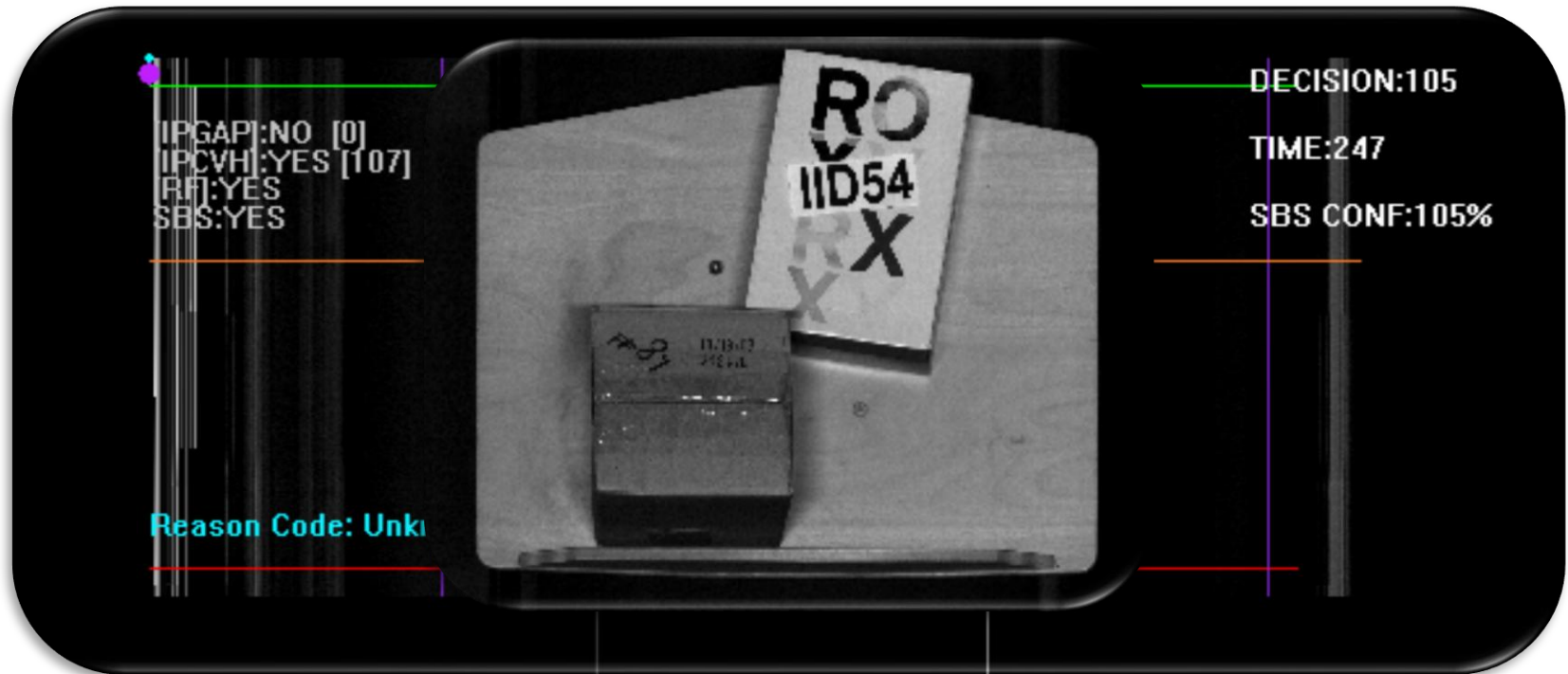
Carton DIM data used for storage allocation in the DC

Use dimension data for trailer utilization tracking



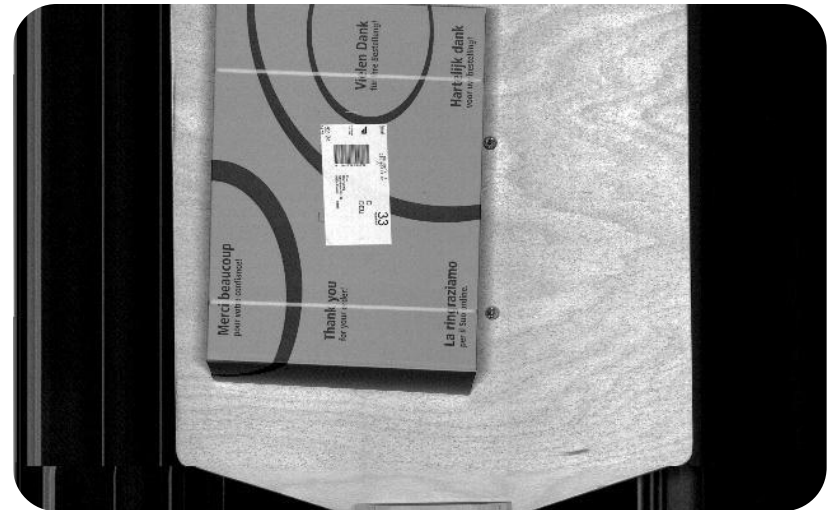
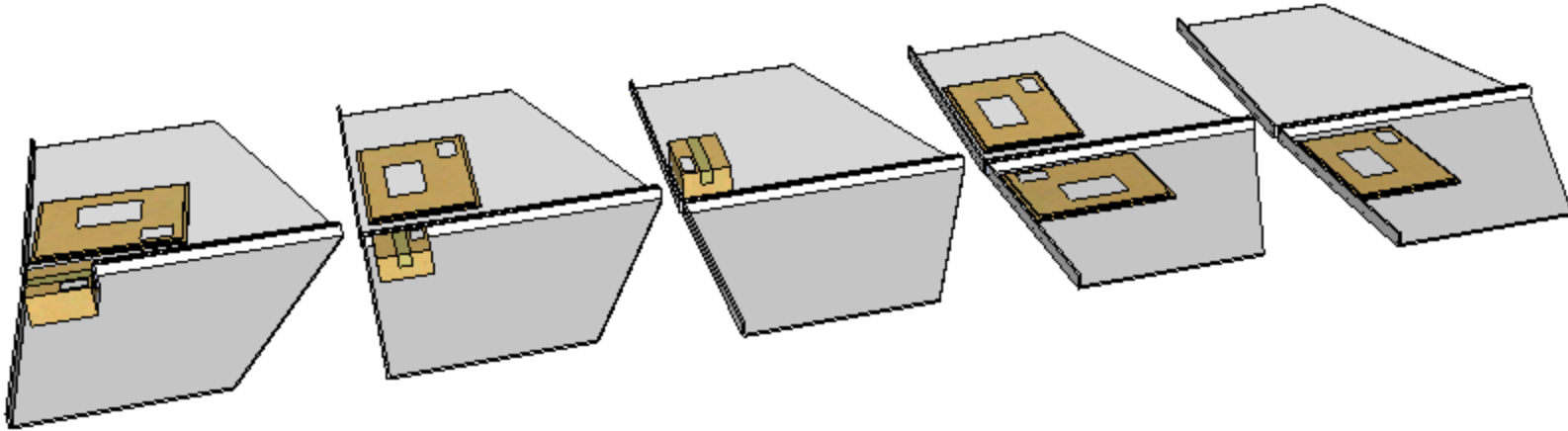
Side-By-Side Detection

General discount retailer

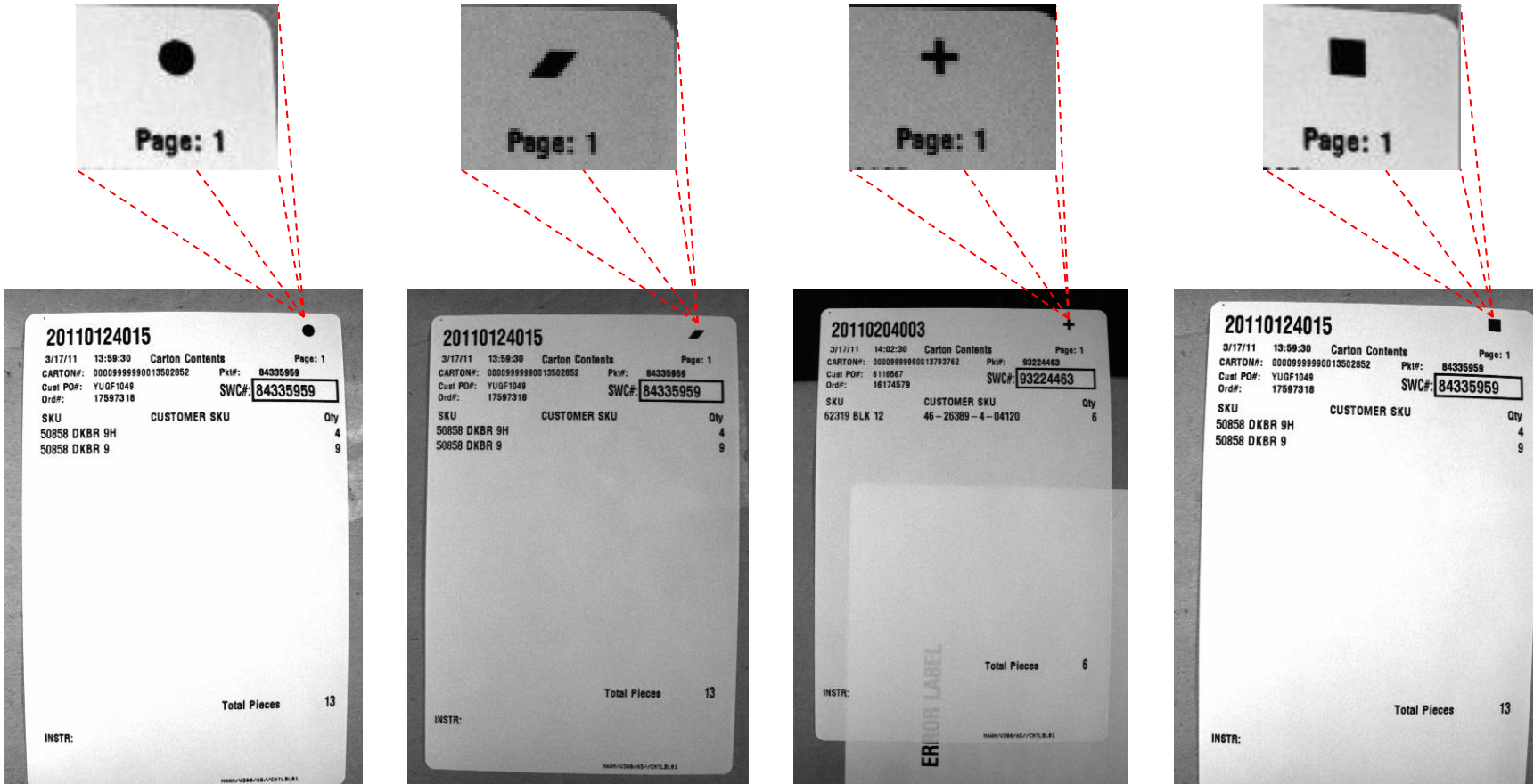


Empty Tray Detect

Electronic component distributor



Footwear apparel

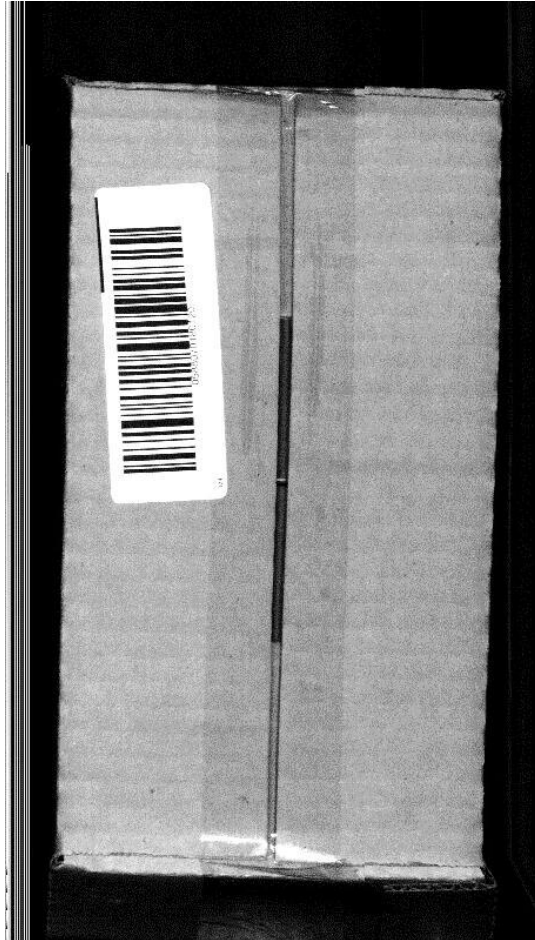


Liquor distribution

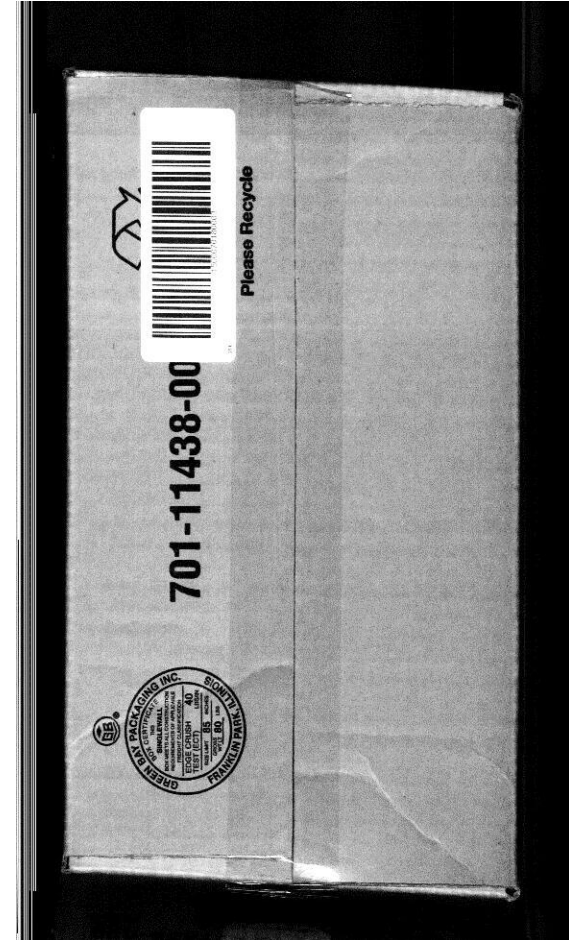


Loss Prevention

eCommerce retailer



VS.

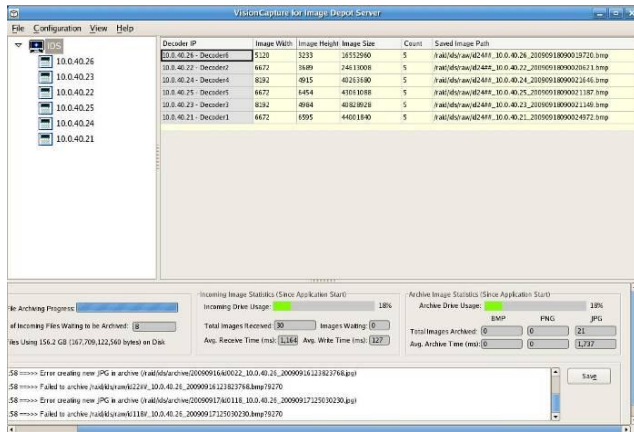




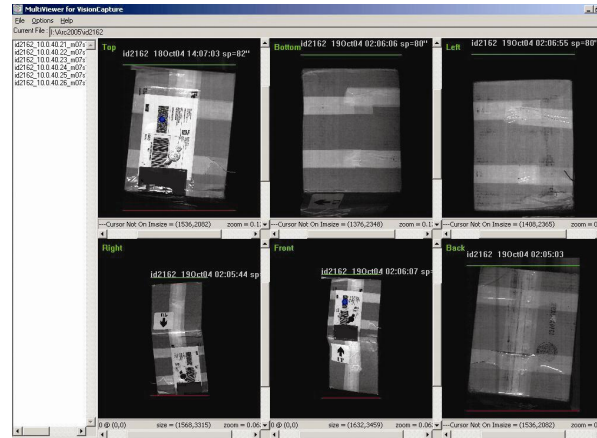
Convenience store distribution



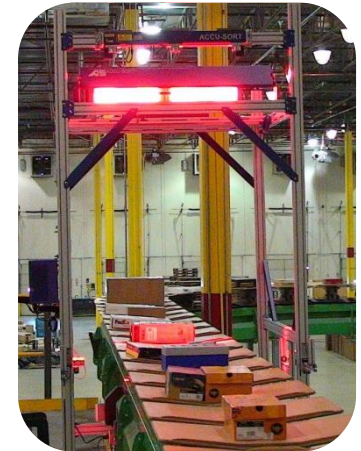
Saving Images



No-read analysis



SBS detection



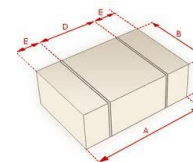
Spatial management



Other Operations



Label
compliance



Carton
sizes



Shipper
claims



Loss
Prevention

For More Information:

Speaker: john.park@datalogic.com

Home Page: www.datalogic.com

Visit ProMat 2013 Booth #2031