

SOLVE FOR X.

IoT and Supply Chain Management

Sense the Change...Respond and Adopt

Presented by:

**Rob Auld - VP of Sales - Americas
SOTI Inc.**



SOTI®

What is Supply Chain and What is IoT?



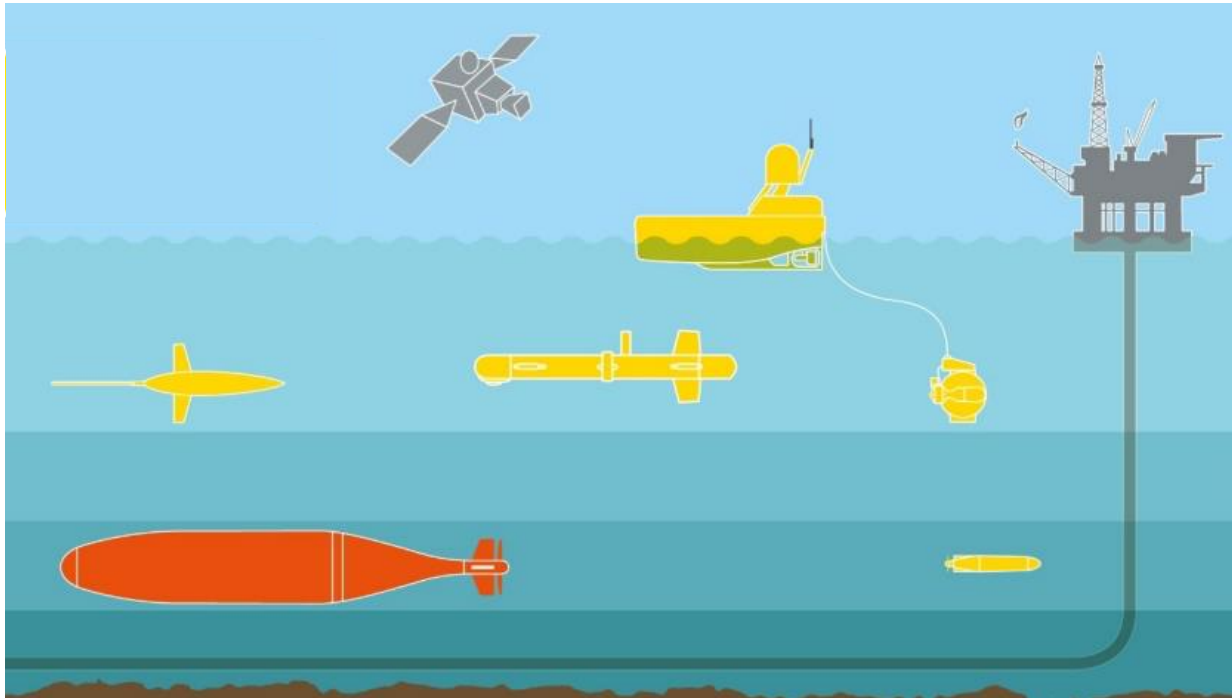
The IoT refers to the connection of devices (other than typical fare such as computers and smartphones) to the Internet. Cars, kitchen appliances, and even heart monitors can all be connected through the IoT.

IOT will be used to reduce costs and increase customer experience at each one of these steps

IoT today | Raw Materials Example

From Deep Horizon to:

Wavegliders, Autonauts, Deeptrekkers



- Remote Monitoring
- Employee Safety
- Cost Reduction
- Compliance

SOLVE FOR X.

Manufacturing | Factory of the Future



Raw Materials



Pre-Production



Production



Transportation

SOLVE FOR X.

Transportation



SOLVE FOR X.

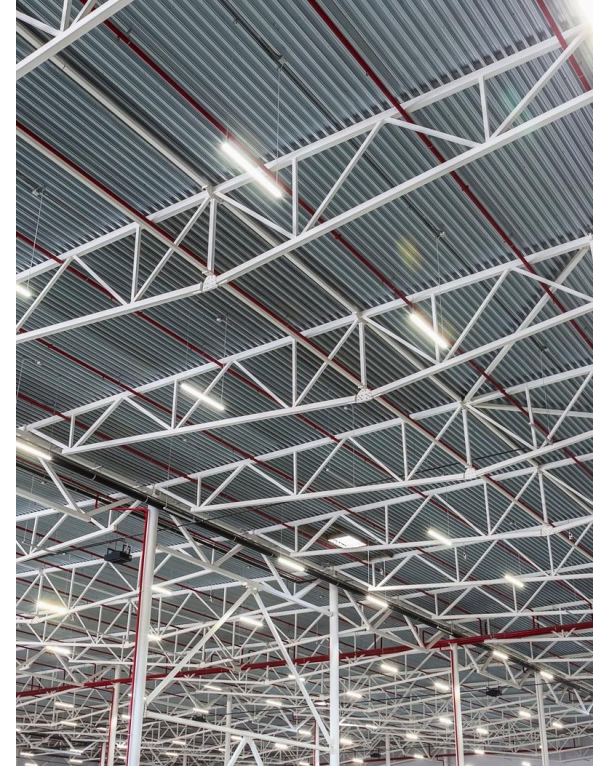
Warehousing



- RFID



- Wearables



- Smart lighting save 70% on lighting costs

SOLVE FOR X.

Within the Supply Chain



Manufacturing

Transportation

Warehousing

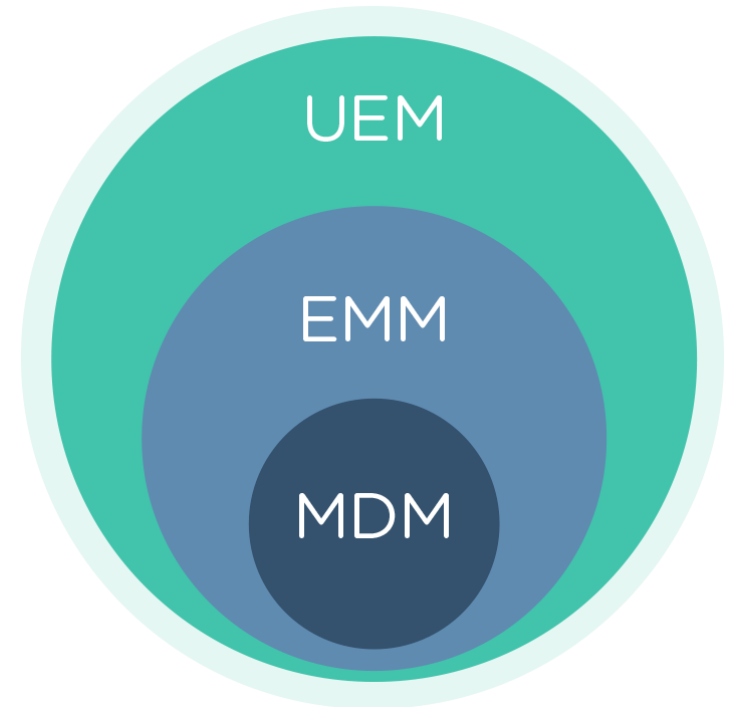
Top five considerations for managing the IoT

- **Economies of scale should apply** – managing ten thousand devices should be just as easy as managing ten devices.
- **Device diversity is an opportunity, not a challenge** – Embrace the new devices and endpoints as they offer the potential to transform your business.
- **Security by design** – Consider the potential risks of your IoT deployment during the initial stages – plan for the worst and hope for the best.
- **Avoid proprietary ecosystems** – Open standards are not always better, but consider the long-term ramifications of locking-in to a closed ecosystem.
- **Future-proof your investment** – The IoT is just taking off and new standards and protocols are showing up every month. Don't be left behind.

How do you adopt and change?

One software solution to secure and manage it all

- Mobile Device Management
- Enterprise Mobility Management
- Unified Endpoint Management



Questions?

- If you have more questions feel free to stop by booth S4662 to find out more or contact Rob Auld at rob.auld@soti.net