



PROMAT

2015

McCormick Place South | Chicago

March 23-26, 2015

promatshow.com

***Improve and Optimize
Facility Efficiency
With
Real Time Monitoring***

Sponsored by:

COGNEX

Presented by:

**Shane LaChappelle
Manager, Product Marketing**

powered by



www.ProMatShow.com

© 2015 MHI®
Copyright claimed for audiovisual works and
sound recordings of seminar sessions. All rights reserved.



Agenda

- Potential Inefficiencies at a Distribution Center
- The Real Cost of No-reads
- Introducing Machine Vision
- Benefits
- Case Studies
- Questions

FIND WHAT'S
NEXT.



PROMAT 2015

McCormick Place South | Chicago
March 23-26, 2015
promatshow.com

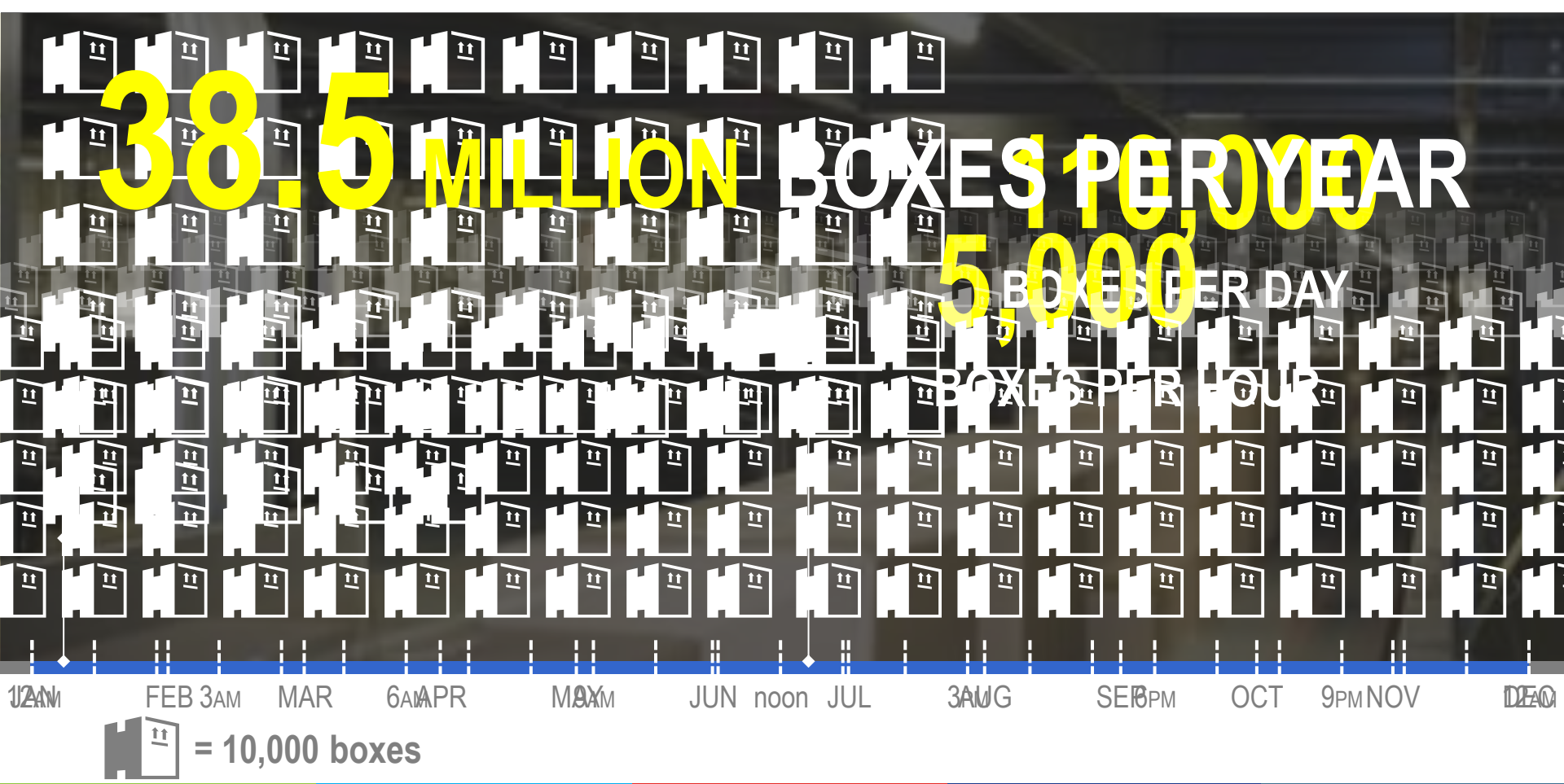
powered by  MHI

Potential Inefficiencies at a Distribution Center



FIND WHAT'S
NEXT.

Why Do You Want High Read Rates?

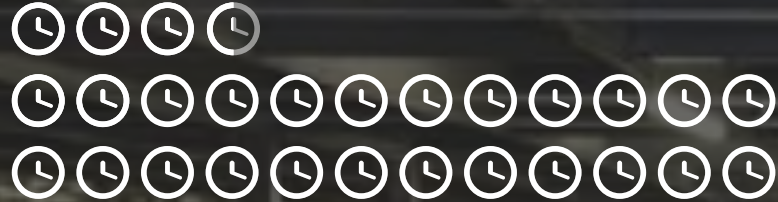


INDUSTRY STANDARD

99.8%



3.5
OPERATORS TO
HANDLE REWORK



375
REWORK MAN
HOURS PER DAY



385,000
NO-READS
PER YEAR

The return is MILLIONS in savings

 = 10,000 no-reads

**FIND WHAT'S
NEXT.**



PROMAT 2015

McCormick Place South | Chicago
March 23-26, 2015
promatshow.com

powered by  MHI

Introducing Machine Vision to the Distribution Center

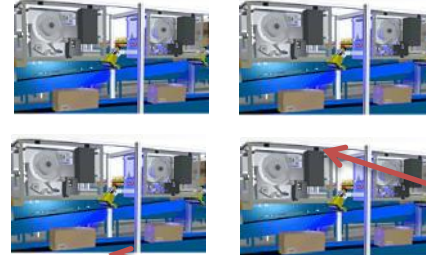
FIND WHAT'S NEXT.

RTM @ Distribution Facility

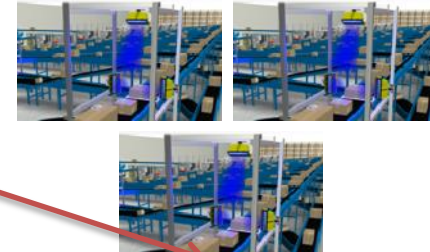
Main Shipping Sorter



Print and Apply Lines



Induct Stations



Web-based Interface



Tote Scanning



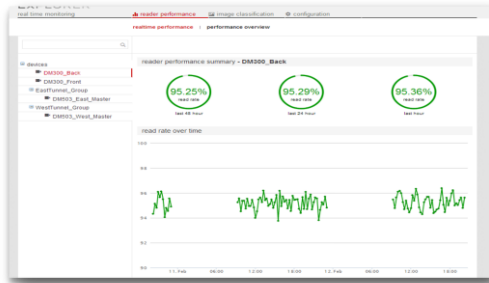
Hand Sorting



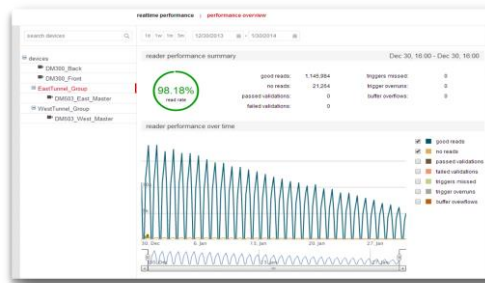
Pallet Scanning



Real Time Monitoring provides a web-based means for graphically representing the health of an industrial barcode reader installation:



Collecting and charting read statistics over time.



Providing an overview of a facility's performance by aggregating data from multiple scan points.



Leveraging the full power of machine vision software to analyze NoRead images to find potential problems in the customer's process.

FIND WHAT'S NEXT.



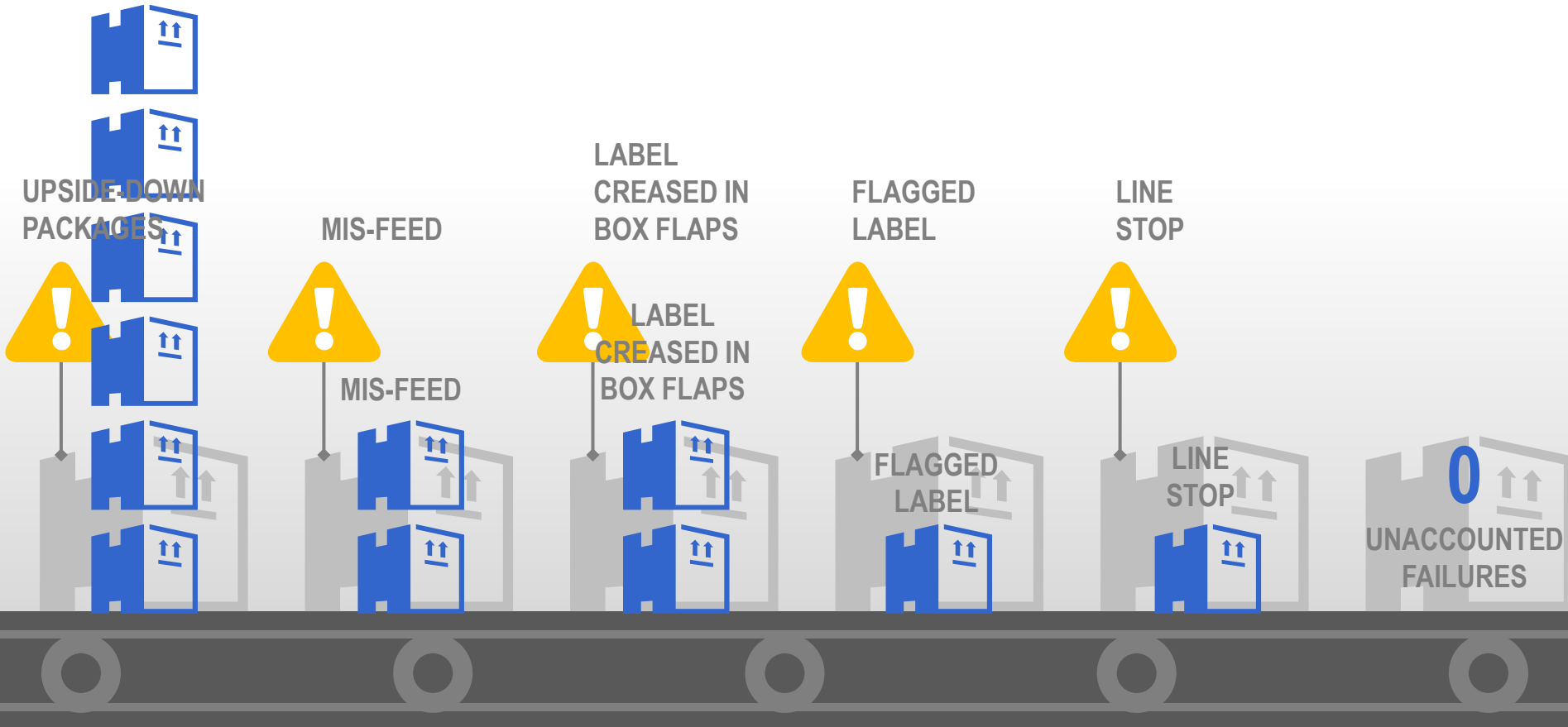
PROMAT 2015

McCormick Place South | Chicago
March 23-26, 2015
promatshow.com

powered by MHI

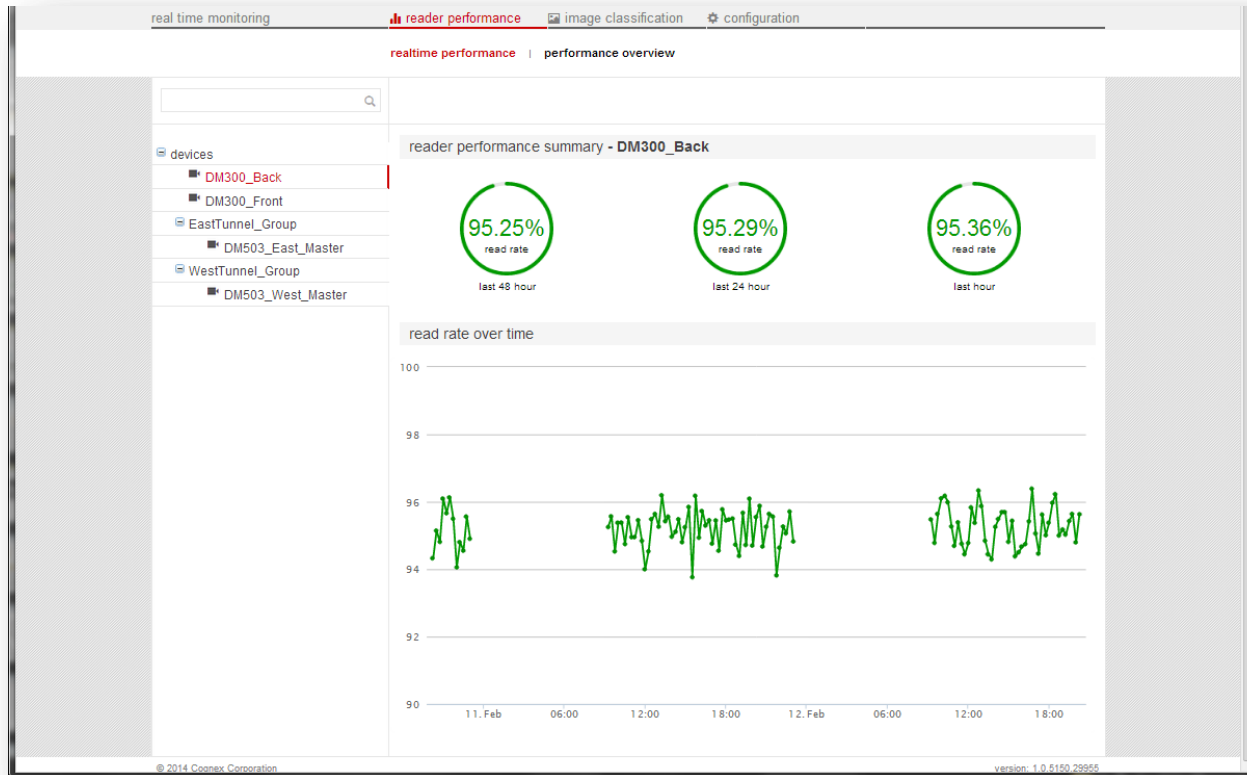
UPSIDE-DOWN
PACKAGES

Analyzing No Reads Causing Process Issues



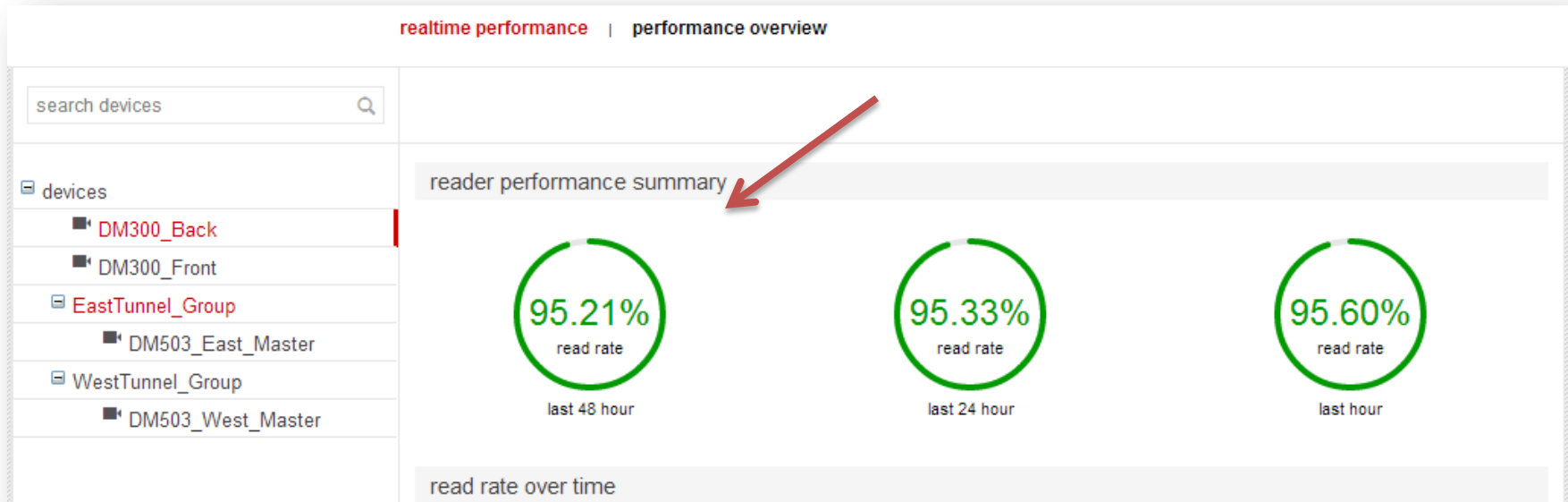


RTM Website Overview



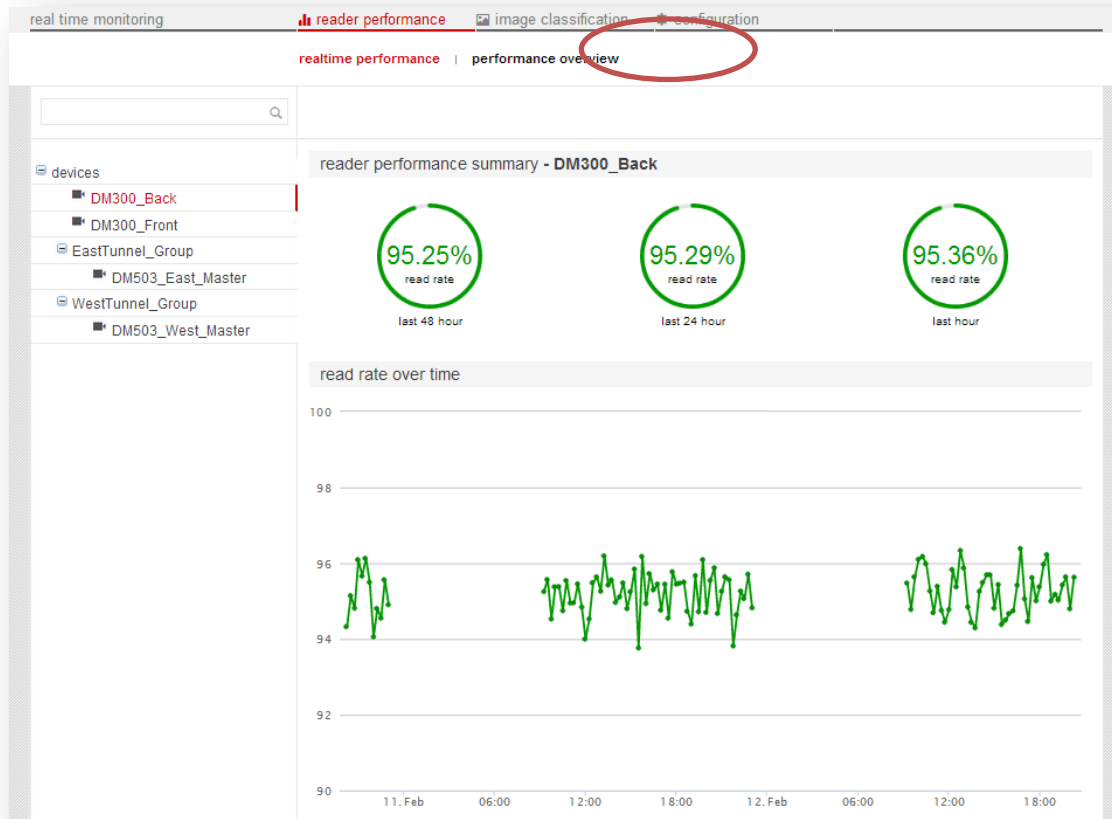


RTM Device Grouping



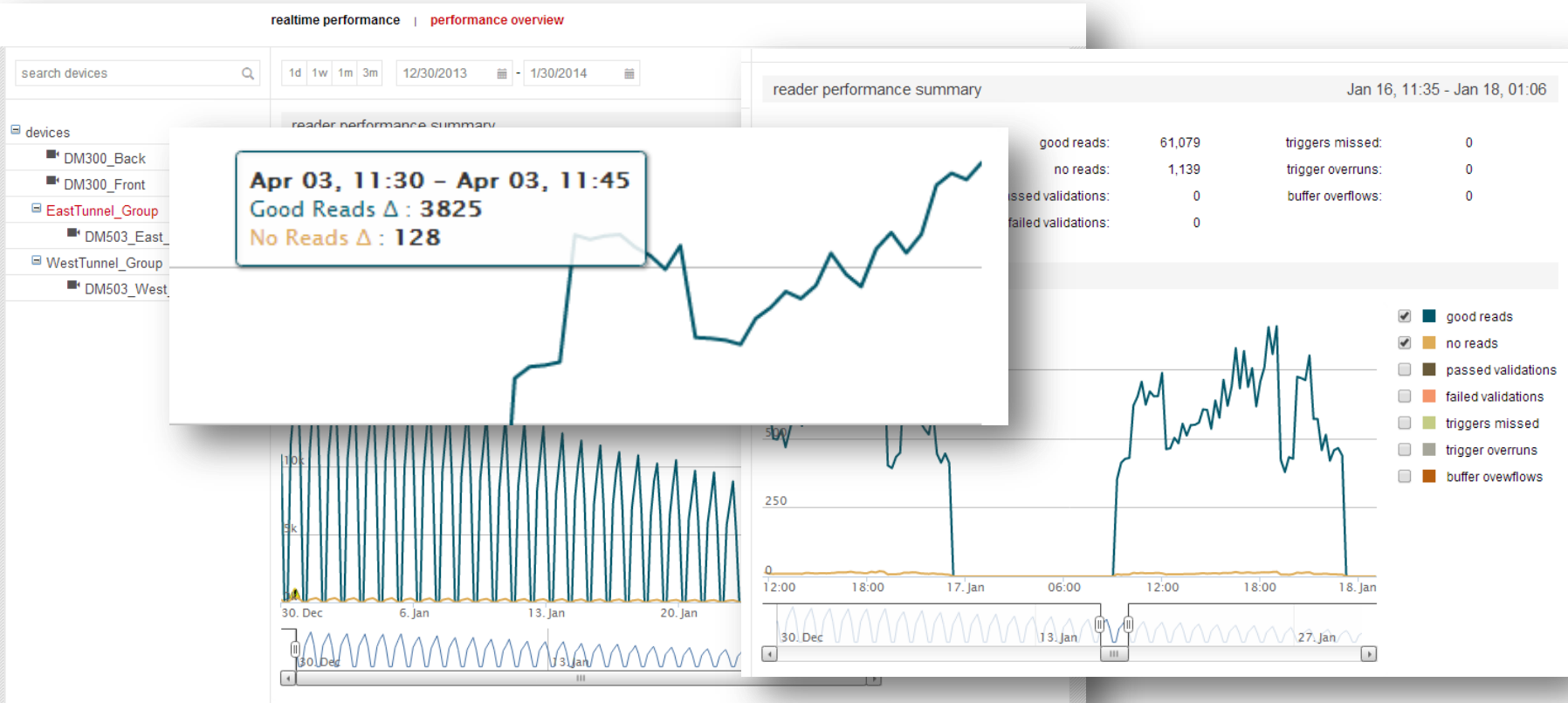


RTM Realtime Performance



– Dashboard stats for last hour, 24 hours, and 48 hours

RTM Performance Overview



- Total number of good reads and NoReads from the chosen time period
- Refined detail about read rates
- Interactive graph

FIND WHAT'S NEXT.

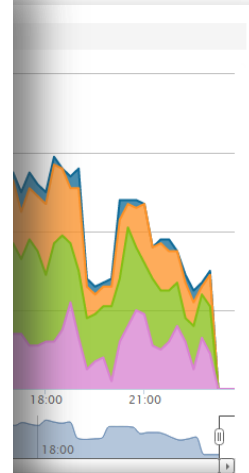
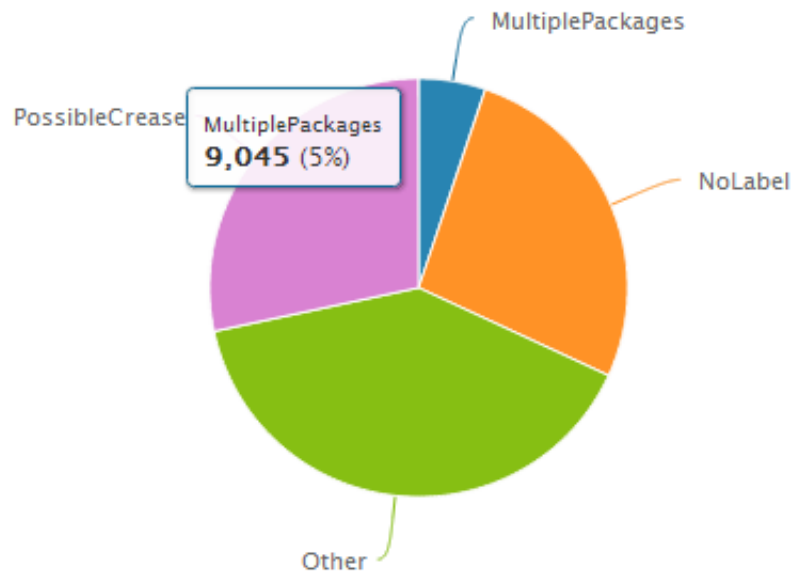
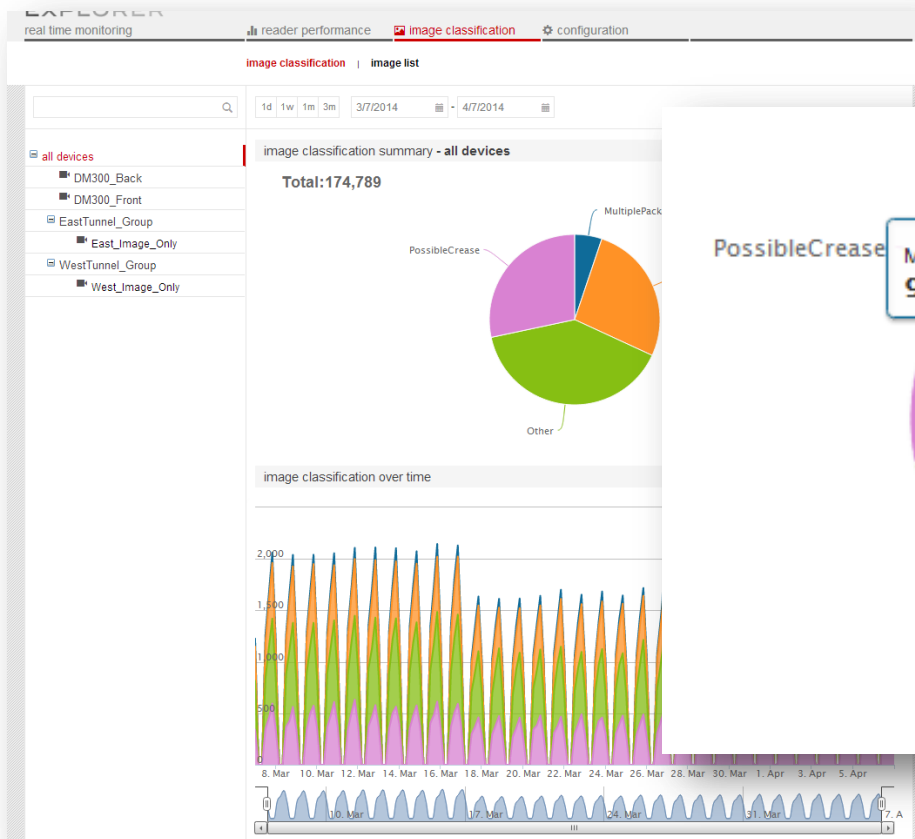


PROMAT 2015

McCormick Place South | Chicago
March 23-26, 2015
promatshow.com

powered by MHI

RTM Image Classification



- Image Classification/NoRead Image Analysis data



RTM Image Classification List

classification details ← →

classification: **PossibleCrease** ■


date & time: 2014.02.12. 20:00

trigger source: DM300_Back

input image collection

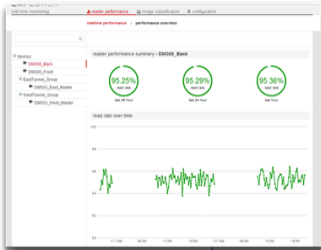
DM300_Back

Image index: 0



- Image List and Classification Details

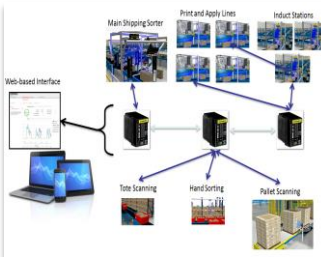
Benefits of Real Time Monitoring



Web based interface for reader performance monitoring



Automatic defect classification of any package that fails to read



Scalable architecture for facility or enterprise coverage

**FIND WHAT'S
NEXT.**



PROMAT 2015

McCormick Place South | Chicago
March 23-26, 2015
promatshow.com

powered by  MHI

Case Study – Ecommerce Read-Rates

**FIND WHAT'S
NEXT.**



PROMAT 2015

McCormick Place South | Chicago
March 23-26, 2015
promatshow.com

powered by  **MHI**

Case Study – Fulfillment Center

S T Q U J E G I V Q N V E R P R
E V E R E P H T R S M A T E R I A
A S S L A P U L W E S W D R A W S

FIND WHAT'S NEXT.



PROMAT 2015

McCormick Place South | Chicago
March 23-26, 2015
promatshow.com

powered by  MHI

Questions



**FIND WHAT'S
NEXT.**



PROMAT 2015

McCormick Place South | Chicago
March 23-26, 2015
promatshow.com

powered by  MHI

For More Information:

Speaker email:

shane.lachappelle@cognex.com

Website: www.cognex.com

Or visit ProMat 2015 Booth #4915